

德国制造  
Made in Germany



妥善包装 | Well packed...





## SMB德国雪德机械工程有 限公司

德国雪德机械工程有 限公司是一个高品质, 创新领先的捆包机厂家。此外,SMB系统的专业 知识已经扩大了一个独特系统。 SMB拥有的机器的不同分店具有广泛的应用灵 活, 模块化的产品范围。

100% 德国制造 – SMB 优质的技术在全世界使用。 超过30年的经验, 具有一支年轻而富有创造力的 团队的愿景结合确保了最佳的客户带来利益。 智能解决方案可供选择。

只需典型的SMB解决方案, 都来自同 一个来源。

## 捆扎技术

直接从制造商, 一个来源。

- ✚ 需求分析
- ✚ 机器
- ✚ 工程
- ✚ 定制的方案
- ✚ 服务
- ✚ 售后服务
- ✚ 备件
- ✚ 打包材料
- ✚ 经费的筹措

## SMB Schwede Maschinenbau GmbH

The company

SMB Schwede Maschinenbau GmbH is one of the leading manufacturers of high-quality, innovative strapping machines for packaging with plastic strap. In addition, the SMB system expertise has been expanded by a unique pick-by-light picking system. SMB possesses a flexible, modular product range with a broad spectrum of applications for different branches of industry.

100% made in Germany – SMB premium technology is deployed worldwide.

More than 30 years of experience, combined with the visions of a young and creative team ensure optimum customer benefits:

Smart solutions that are available nowhere else.

**Simply typical SMB solutions – all from one source!**

## Strapping Technology

Directly from the manufacturer – all from one source!

- ✚ Requirement Analysis
- ✚ Machines
- ✚ Engineering
- ✚ Customized Solutions
- ✚ Service
- ✚ Spare Parts
- ✚ Strap
- ✚ Financing





## 自动打包机

- 方便使用与直观的
- 高可用性, 经济性好
- 稳健和极低的维护
- 功能强大
- 可变带宽
- 节省能源

### 为什么SMB是您正确的选择

- ▶ 当重点在于高性能, 高可靠性, 耐用性和生产率。
- ▶ 当多捆选件和附件是必需的。
- ▶ 当打包各种任务的完善和个人的配置是必需的。
- ▶ 当最佳的具体解决办法是必需的。
- ▶ 当一切都需要进行快速和容易。

### SMB技术优质



## Automatic Strapping Machines

- User-friendly and intuitive
- Economical due to high availability
- Robust and extremely low-maintenance
- Powerful
- Variable bandwidth
- Energy saving

**We regard automatic strapping machines as machines that are manually loaded and in which the automatic strapping is individually activated.**

### When is SMB the right choice for you?

- ▶ When high performance, reliability, durability and productivity are in focus.
- ▶ When a wide range of options and accessories is required.
- ▶ When perfect and individual configurations for a variety of strapping tasks are required.
- ▶ When optimal branch-specific solutions are required.
- ▶ When everything needs to be quick and easy.

### SMB premium technology „inside“

But it is really not that important to you: “Simply” strap!

**SMB: You strap – we take care of the rest!**



## 全自动打包机

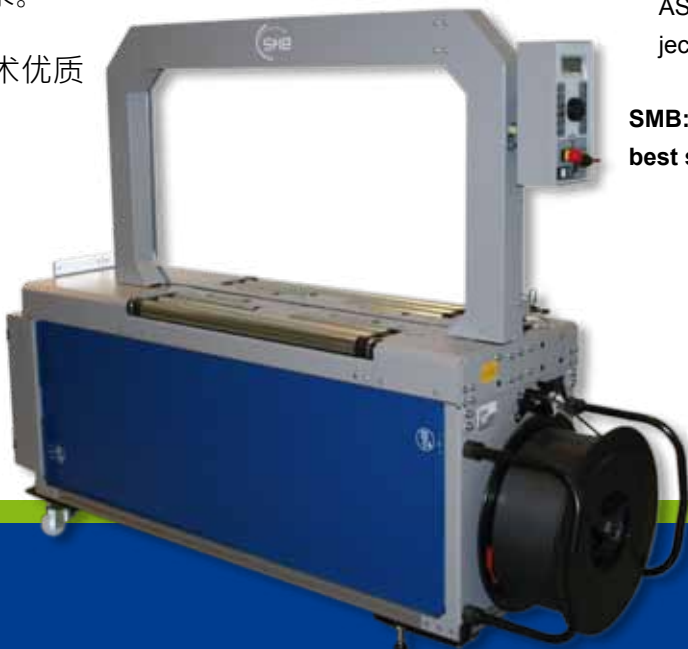
- 方便使用与直观的
- 高可用性, 经济性好
- 最大的灵活性 (可选择带轨道尺寸, 选项和应用程序)
- 稳健和极低的维护
- 可调肩带宽度5 毫米到9毫米, 12毫米是选项

### 为什么SMB是您正确的选择

- ▶ 当重点是在优化流程的整合, 高性能, 极高的可靠性, 耐用性和高生产率。
- ▶ 打捆核心可以运行至少300万次则需要维护。
- ▶ 当打包各种任务的完善和个人的配置是必需的。
- ▶ 当最大的需求是产品质量和范围的选项和配件需要是必需的
- ▶ 当谈到个别行业的解决方案。
- ▶ 当SMB的技术是必需的保费为客户的具体过程和项目。

在SMB, 我们为您找到最佳的解决方案, 可满足您的需求。

SMB技术优质



## Fully Automatic Strapping Machines

- User-friendly and intuitive
- Economical due to optimum availability
- Maximum flexibility (frames, options, applications)
- Extremely robust and low-maintenance
- Adjustable to 5 - 9 mm, 12 mm optional

**Fully automatic machines are machines designed for the integration into fully automatic packaging and dispatch lines, in which both the feed and the activation of the strapping take place automatically.**

### When is SMB the right choice for you?

- ▶ When optimal process integration, high performance, extreme reliability, durability and productivity are in focus.
- ▶ When it is expected that the sealing head „does“ at least three million straps without maintenance.
- ▶ When perfect and individual configurations for a variety of strapping tasks are required following a customer-specific analysis.
- ▶ When maximum demands are made on product quality and a wide range of options and accessories is needed.
- ▶ When it comes to individual industry solutions.
- ▶ When the SMB premium technology (DAT, MFT, SAO and ASLF) is required for customer-specific processes and projects.

**SMB: We strap (nearly) everything – we will even find the best solution for you, if we do not already have it.**



## 技术中心

SMB 优质技术

### ► 直接接入技术

直接接入技术可以方便地打包进区开通 按人体工程学的控制杆，没有工具,我们可以非常迅速打开捆扎饲料区 任何有缺陷的皮带或由此产生的麻烦，可以在几秒钟内轻松解决。 在关闭的打带料部位，机器可立即操作。

### ► 没有打带损失函数

此功能确保打带不再在机器卡住让机器恢复正常功能。 机器故障是非常低, 因为机器稳健, 提高了机器的可用性。

## Tech Center

SMB premium technology

### ► D A T Direct-Access-Technology

The Direct-Access-Technology allows direct access to the strap in the strap drive. The strap drive can be opened very quickly without tools by pressing an ergonomic control lever. The defective strap or a resulting disturbance can be easily dealt with in seconds. After closing the strap drive work can continue immediately.

### ► A S L F Anti-Strap-Loss-Function

The Anti-Strap-Loss-Function ensures that the strap no longer gets lost in the machine and is permanently available for the function modules. The machine is thus resilient to malfunction in the production process, which in turn increases the machine availability.

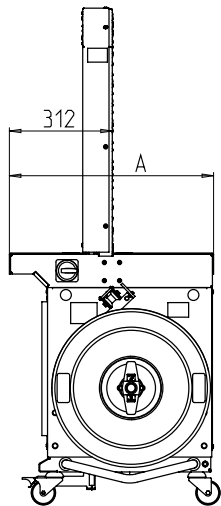


## 可供手动操作的自动打包机

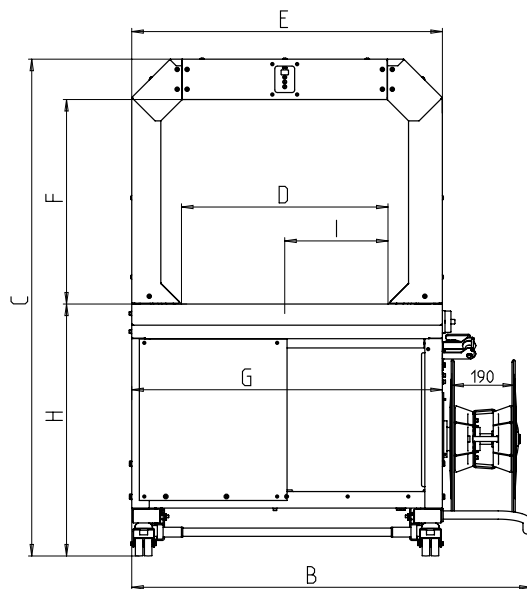
- 高容量
- 容易保养
- 5-9mm打包带

## 配备：

- 打包带宽度5-9mm, 可调整
- 打包带宽度12mm, 可选择
- 框架尺寸的选择根据产品尺寸
- 裁剪装置
- 外置带芯
- 操作简便的控制面板
- 踏板设置在操作者边
- 可移动机组
- 气压压板, 可选项
- 打包带张紧力自动调整
- 电子带芯刹车器
- 台面可调整
- 台面盘可拆卸
- 低维护, 低磨损带轨道



尺寸(毫米)



电源连接

订单号码		x12153	x12887	x12236	x14294	x12249	x11179	x17779	x19250
最大产品尺寸	b x h	500x400	600x400	600x600	800x400	800x600	800x800	800x1000	800x1250
机器宽度	A	618	618	618	618	618	618	618	618
机器总长度	B	1209	1209	1209	1441	1441	1441	1441	1441
机器总高度	C	1333-1473	1333-1473	1504-1644	1333-1473	1504-1644	1504-1644	1957-2097	2192-2332
带轨道内宽	D	512	632	625	852	849	854	854	854
带轨道外宽	E	820	940	940	1172	1172	1172	1172	1172
带轨道内部高度(包括压杆)	F	446	446	619	446	616	816	1070	1304
工作台长度	G	940	940	940	1172	1172	1172	1172	1172
台面高度	H	763-900	763-900	763-900	763-900	763-900	763-900	763-900	763-900
捆包的头部 距离	I	256	314	314	314	314	314	314	314

## 技术规格

### 捆扎能力

打包速度：每分钟平均52次

实际速度将按照包装物尺寸和捆紧力而定

### 包装物规格

不同的框架可适合各种包装物的尺寸

最小宽度：65mm

最小高度：5mm

包装物最高重量：30kg

### 收紧力

最大收紧力：325N

### 打包带材料

聚丙烯

宽度：5-9mm, 12mm可选

厚度：0.4-0.6mm

### 热烫头

可达到带子自身拉力强度的80%

### 带卷

内径：200/228mm

外径：420mm

宽幅：190(160,180,200) mm

### 电力参数

可按各种规格

电源：230V, 50/60Hz, 16A, IP22

### 可根据客户要求

总功率：1.0kw

总重量：170kg

工作温度：+10[50]-+40[104]

The standard strapping machine: now easier to operate

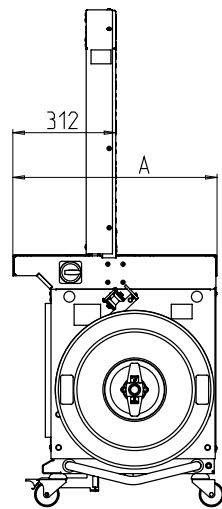


- High capacity
- Low maintenance
- 5 - 9 mm strap

#### EQUIPMENT:

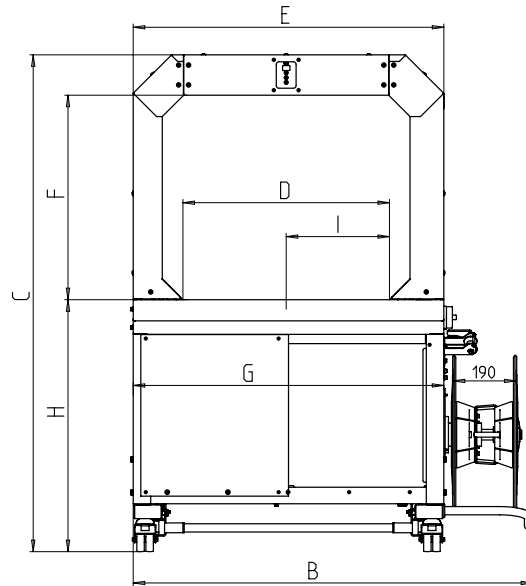
- Strap width 5 - 9 mm, adjustable
- Strap width 12 mm factory-built, optional
- Strap arch for bundles for max. 600mm x 600mm (width x height)
- Strap cutter
- Coil outside
- Operation terminal
- Foot switch on operator side
- Machine movable
- Bundle press, optional
- Tension adjustable with 10 steps
- Electrical coil brake
- Table height steplessly adjustable
- Table plate removeable, screwed
- Low maintenance and low wear strap arch

# SMBSM1



Maße in mm  
dimensions in mm

Netzanschluss  
Power connection



Order number		x12153	x12887	x12236	x14294	x12249	x11179	x17779	x19250
Max. bundle size	b x h	500x400	600x400	600x600	800x400	800x600	800x800	800x1000	800x1250
Machine width	A	618	618	618	618	618	618	618	618
Total length	B	1209	1209	1209	1441	1441	1441	1441	1441
Total height	C	1333-1473	1333-1473	1504-1644	1333-1473	1504-1644	1504-1644	1957-2097	2192-2332
Inner width (arch)	D	512	632	625	852	849	854	854	854
Arch width	E	820	940	940	1172	1172	1172	1172	1172
Inner height (with press)	F	446	446	619	446	616	816	1070	1304
Table length	G	940	940	940	1172	1172	1172	1172	1172
Table height	H	763-900	763-900	763-900	763-900	763-900	763-900	763-900	763-900
Position sealing head	I	256	314	314	314	314	314	314	314

## TECHNICAL SPECIFICATION:

### CAPACITY:

Single strap, bundles/minute up to:  
Depending on arch size and tension force

52

### BUNDLES:

Width in mm: min. 65  
Max. bundle width depending on arch size  
Height in mm: min. 5  
Max. bundle height depending on arch size  
(see drawing)  
Weight in kg: max. 30

### STRAP TENSION:

Adjustable with 10 steps  
Strap tension in N: max. 325

### STRAPPING MATERIAL:

Polypropylene DIN EN 13 394  
Width in mm: 5 - 9  
Optional: strap width in mm: 12  
Thickness in mm: 0,4 - 0,6

### SEALING METHOD:

Heat seal. Tensile strength of welded joint is approx. 80% of the breaking strength of the strap

### STRAP COIL:

Core ID in mm: 200/228  
Core OD in mm: 420  
Width in mm: 190 (160,180,200)

### POWER SUPPLY:

230V, 50/60Hz, connectable to 100V - 120V; 200V - 240V, Maximum fusing 16A (B-character)  
Protection Type: IP 22

### POWER CONSUMPTION:

Total consumption approx. in kW: 1,0

### WEIGHT:

Total weight approx. in kg: 170

### OPERATING CONDITIONS:

Temperature range in °C [°F]: +10 [50] - +40 [104]



**SMB SCHWEDE MASCHINENBAU GMBH**

Markgrafenstraße 2 | D-95497 Goldkronach | Germany  
Tel.: +49 (0) 9273 / 982-201 | Fax.: +49 (0) 9273 / 982-100  
[www.smb.biz](http://www.smb.biz) | [info@smb.biz](mailto:info@smb.biz)

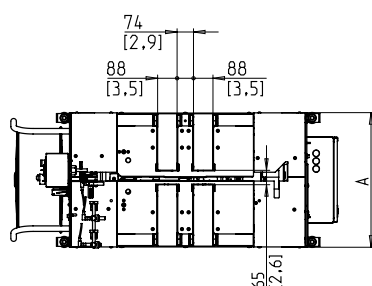
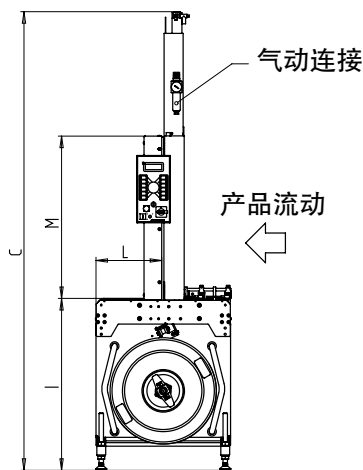
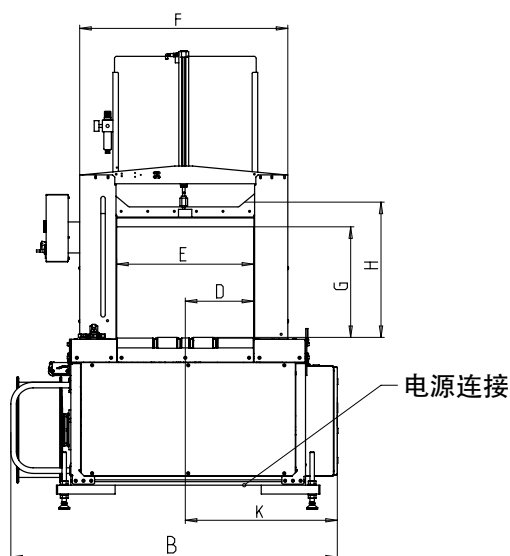


## 全自动打包机

- 不易损坏
- 5-9mm打包带
- 12mm打包带 ( 可选择
- 有不同尺寸的打包卷带供选择

## 配备：

- 自动喷出带圈
- 打包带宽度5-9mm，可调整
- 自动打包带传统系统
- 带卷末端自动检测并弹出剩余打包带
- 裁剪装置
- 可轻易调节张力
- 上游和下游联动
- 传送带速度可轻易调节
- 拨号慢跑操作面板
- 压杆可选项
- 滑动门
- 可编程逻辑控制
- 电动带圈刹车系统
- 能快捷地更换打包带容器
- 台面高度可分段调整
- 台面是铰链的
- 可控制打包流量
- 低维护，低磨损带轨道



带轨道尺寸		600x400	600x600	600x600	800x800	800x800	800x400
捆包的头部：中心位置		X	X	-	-	X	X
捆包的头部：位置偏离中心		-	-	X	X	-	-
输送带		2	2	3	4	4	4
机器宽度	A	608	608	608	608	608	608
机器总长度	B	1477	1477	1604	1827	1827	1827
机器总高度	C	1872-1997	2070-2195	2070-2195	2487-2612	2487-2612	1872-1997
捆包的头部 距离	D	310	310	180	180	423	423
带轨道内宽	E	620	620	620	846	846	846
带轨道外宽	F	940	940	940	1172	1172	1172
带轨道内部高度 (包括压杆)	G	405	505	505	705	705	405
带轨道高度	H	430	605	605	830	830	430
捆包的头部 距离	K	690	690	729	729	973	973
带轨道距离	L	301	301	301	301	301	301
框架高度	M	566	737	737	966	966	566
台面高度	I	775-900	775-900	775-900	775-900	775-900	775-900
整机重量		350	350	370	400	400	390

## 技术规格

### 捆扎能力

打包速度：每分钟最大32次

皮带输送速度：0.8m/s

包装物尺寸 (长\*宽)：300x210mm

实际速度将按照包装物尺寸和捆紧力以及有压板而定

### 包装物规格

不同的框架可适合各种包装物的尺寸

最小长度：140mm

最小宽度：100mm

最小高度：10mm

包装物最高重量：30kg

输入速度 0.3-1 m/s

释放速度：0.32-1.05 m/s

### 收紧力

最大收紧力：325N

最大收紧力长度：200mm

### 打包带材料

聚丙烯

宽度：5-9mm, 12mm 可选

厚度：0.4-0.55mm

### 热烫头

可达到带子自身拉力强度的80%

### 带卷

内径：200mm

外径：420mm

宽幅：190(160,180,200)mm

### 电力参数

可按各种规格

电源：一相或二相220V；可选

总功率：1.5kw

### 气缸：

操作气压：4.5 bar

空气消耗：180升/分

工作温度：+10[50]-+40[104]

The fully automatic strapping machine for universal use

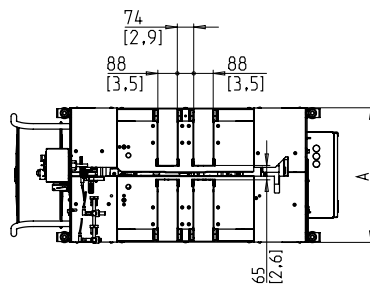
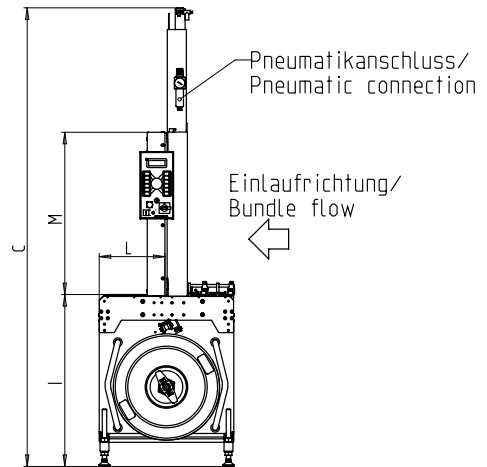
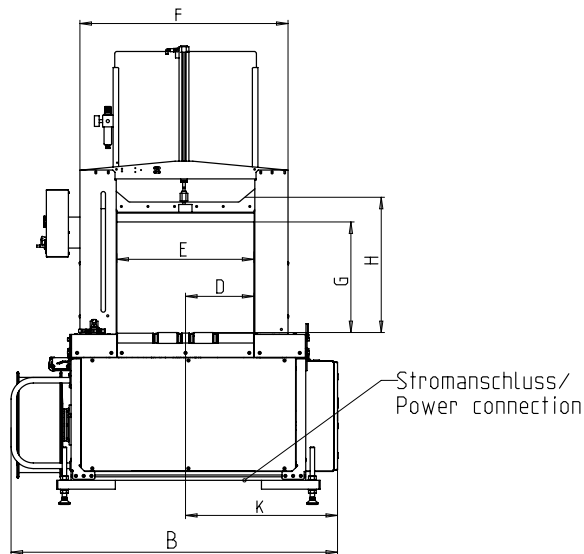


- Low wear
- 5 - 9 mm strap
- 12 mm - optional
- Different arch sizes available

### EQUIPMENT:

- Strap ejection
- Strap width 5 - 9 mm, adjustable
- Automatic strap threading
- Strap end detection system with automatic discharge of remaining strap
- Strap cutter
- Automatic strap tensioning, stepless
- Upstream and downstream interlocks
- Conveyor speed steplessly adjustable
- JOG-DIAL operation terminal
- Bundle press, optional
- Sliding doors
- PLC control
- Electrical coil brake
- Quick-change device for strap dispenser
- Table height steplessly adjustable
- Table top hinged
- Bundle flow control
- Low maintenance and low wear strap arch

# SMBST1



Arch Size		600x400	600x600	600x600	800x800	800x800	800x400
Sealing head centered		X	X	-	-	X	X
Sealing head off-centered		-	-	X	X	-	-
Conveyor belts		2	2	3	4	4	4
Machine width	A	608	608	608	608	608	608
Total length	B	1477	1477	1604	1827	1827	1827
Total height	C	1872-1997	2070-2195	2070-2195	2487-2612	2487-2612	1872-1997
Position sealing head	D	310	310	180	180	423	423
Inner width (arch)	E	620	620	620	846	846	846
Arch width	F	940	940	940	1172	1172	1172
Inner height (with press)	G	405	505	505	705	705	405
Inner height (arch)	H	430	605	605	830	830	430
Position sealing head	K	690	690	729	729	973	973
Position strap arch	L	301	301	301	301	301	301
Arch height	M	566	737	737	966	966	566
Table height	I	775-900	775-900	775-900	775-900	775-900	775-900
Weight in kg		350	350	370	400	400	390

## TECHNICAL SPECIFICATION:

### CAPACITY:

Single strap, bundles/minute up to: max. 32  
 At table belt speed in m/s: 0,8  
 Based on bundle size l x w in mm: 300 x 210  
 Depending on arch size and tension force  
 Without bundle press

### BUNDLES:

Width in mm  
 Min.: 100  
 Max. bundle width depending on arch size  
 Length in mm: min. 140  
 Height in mm  
 Min.: 10  
 Max. bundle height depending on arch size  
 (see drawing)  
 Weight in kg: max. 30

### TRANSPORT SPEED:

Feed side, approx. m/s: 0,3 - 1  
 Discharge side, approx. m/s: 0,32 - 1,05

### STRAP TENSION:

Steplessly adjustable  
 Automatic strap tensioning, stepless, depending on height of bundle  
 Strap tension in N: max. 325  
 Tension path in mm: max. 200

### STRAPPING MATERIAL:

Polypropylene DIN EN 13 394  
 Width in mm: 5 - 9  
 Optional: strap width in mm: 12  
 Thickness in mm: 0,4 - 0,55

### SEALING METHOD:

Heat seal. Tensile strength of welded joint is approx. 80% of the breaking strength of the strap

### STRAP COIL:

Core ID in mm: 200  
 Core OD in mm: 420  
 Width in mm: 190 (160,180,200)

### POWER SUPPLY:

Voltage 1 phase with neutral or 2 phase at: 198V, 208V, 218V, 220V, 230V, 240V, 390V, 400V, 410V, 440V, 450V, 460V, 480V, 490V, 500V

### POWER CONSUMPTION:

Total consumption approx. in kW: 1,5

### PNEUMATICS:

Operating pressure in bar: 4,5  
 Air consumption per cycle in l (free air): 6

### OPERATING CONDITIONS:

Temperature range in °C [°F]: +10 [50] - +40 [104]

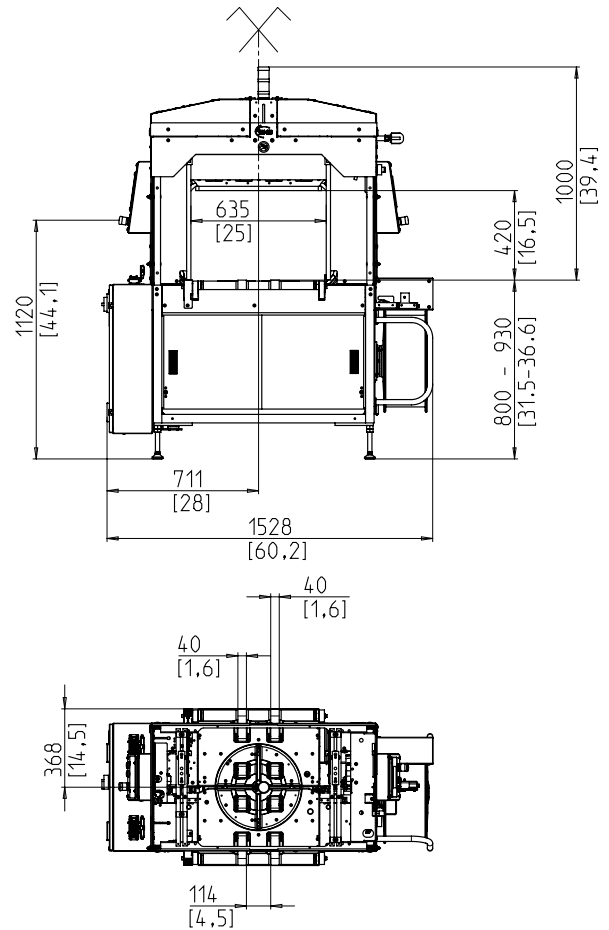
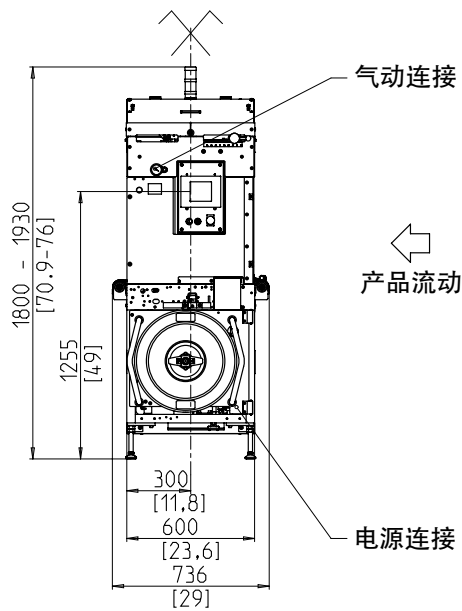


## 在最小的空间中发挥最大的功能

- 高产量
- 容易设置
- 维修成本低
- 捆束器设置在机器内部

## 配备：

- 备有散烟装置
- 喷出带圈
- 带卷末端自动检测并弹出剩余打包带
- 裁剪装置
- 自动调节张力
- 额外的按钮（启动/停止/紧急停止）
- 预留前方和后方机器的连接
- 可调节的传输速度
- 讯号灯（操作正常或故障显示）
- 可在打包过程停止并快速进行捆束的清理
- 机器两旁都有压杆
- 备有安全插座的门（Plexidoors）
- 滑动门
- 封口槽
- 可编程逻辑控制
- 电子带芯刹车器
- 能快捷地更换打包带容器
- 台面高度可分段调整
- 台面备有铰链
- 触摸屏控制面板
- 可控制打包流量
- 低维护，低磨损带轨道



## 技术规格

### 捆扎能力

打包速度 (以框架规格而订)

单条打包: 每分钟平均40次

双条平行打包: 每分钟平均20次

十字打包: 每分钟平均18次

输送速度: 0.8m/s

包装物尺寸 (长\*宽): 300x210mm

实际速度将按照包装物尺寸和捆紧力而定

### 包装物规格

不同的框架可适合各种包装物的尺寸

最小长度: 170mm

宽度: 200-560mm

高度: 10-400mm

十字打包的捆包物最大宽度: 560mm

十字打包的捆包物最小长度: 200mm

包装物最高重量: 25kg

输入速度 0.3-1 m/s

释放速度: 0.32-1.05 m/s

### 收紧力

最大收紧力: 220N

最大收紧长度: 130mm

### 打包带材料

聚丙烯

宽度: 4.8-5.2mm

厚度: 0.4-0.45mm

### 热烫头

可达到带子自身拉力强度的80%

### 带卷

内径: 200mm

外径: 420mm

宽幅: 190(160,180,200)mm

### 电力参数

可按各种规格

电源: 200-440V ; 3AC ; 50Hz

总功率: 1.5kw

### 气缸:

操作气压: 6 bar

压板最大压力: 500N

总重量: 540kg

工作温度: +10[50]-+40[104]

Maximum possibilities at smallest space

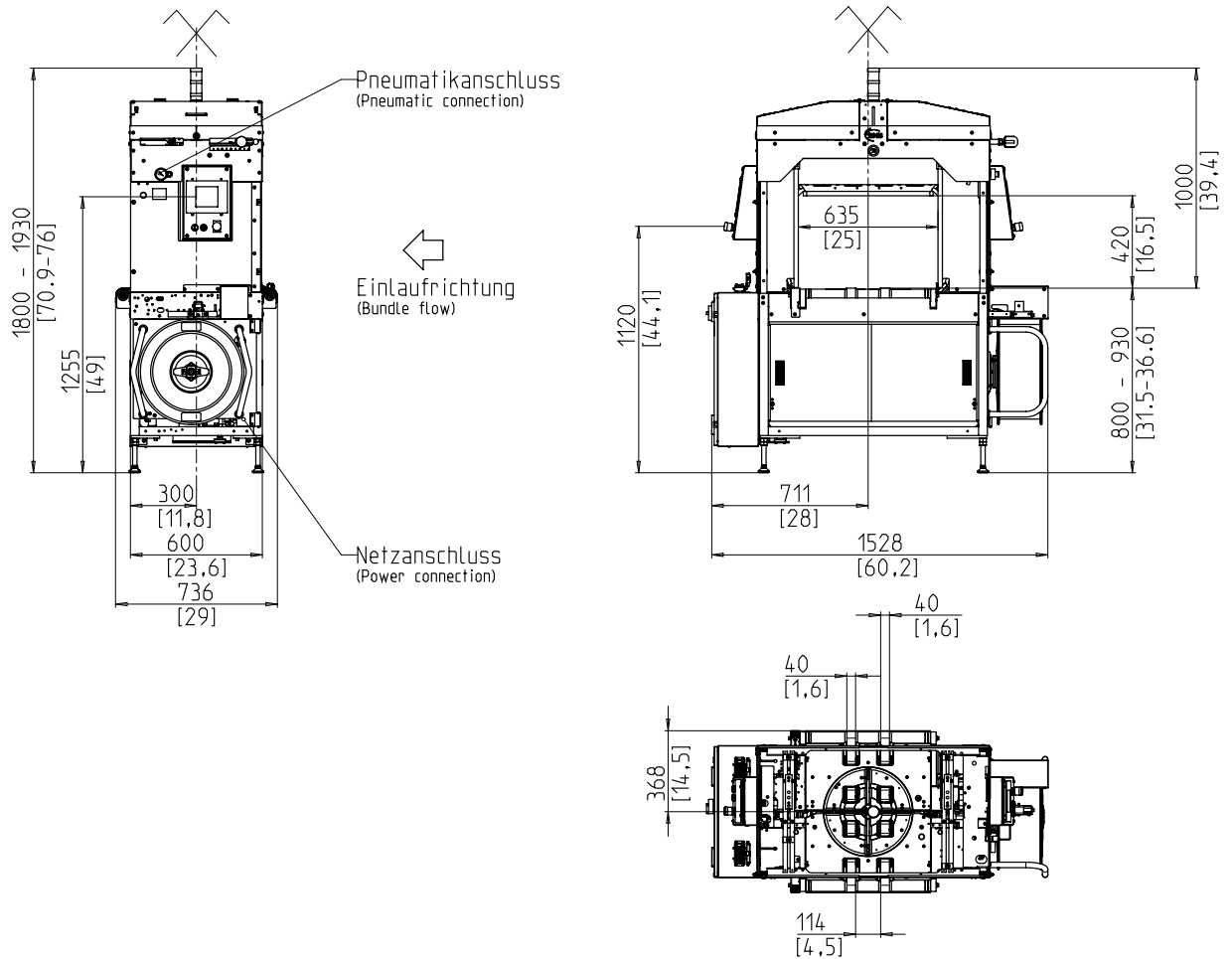


- High capacity
- Very good accessibility
- Low maintenance
- Bundle turn inside the machine

## EQUIPMENT:

- Fume dissipation
- Strap ejection
- Automatic strap threading
- Strap end detection system with automatic discharge of remaining strap
- Strap cutter
- Automatic strap tensioning, stepless
- Additional operating buttons, opposite to terminal (Start/Stop/Emergency Stop)
- Upstream and downstream interlocks
- Strap detection at strap drive
- Conveyor speed steplessly adjustable
- Signal light tower: operation and failure
- Bundle stops, no contact with bundle when clearing the bundle, with quick adjustment
- Bundle press at both sides of the strapping line
- Two plexidoors with safety switch
- Sliding doors
- Sealing head drive, servo driven
- PLC control
- Electrical coil brake
- Quick-change device for strap dispenser
- Table height steplessly adjustable
- Table top hinged
- Touchscreen operation terminal
- Bundle flow control
- Low maintenance and low wear strap arch

# SMBN5EK



## TECHNICAL SPECIFICATION:

### CAPACITY:

Single strap, bundles/minute up to:	40
Parallel strap, bundles/minute:	20
Cross strap, bundles/minute:	18
At table belt speed in m/s:	0,8
Based on bundle size l x w in mm:	300 x 210

### BUNDLES:

Width in mm:	200 - 560
Length in mm:	min. 170
Height in mm:	10 - 400
Bundle diagonals at cross strapping in mm:	max. 560
Bundle length at cross strapping in mm:	min. 200
Weight in kg:	max. 25

### TRANSPORT SPEED:

Feed side, approx. m/s:	0,30 - 0,95
Discharge side, approx. m/s:	0,40 - 1,05

### STRAP TENSION:

Automatic strap tensioning, stepless, depending on height of bundle	
Strap tension in N:	max. 220
Tension path in mm:	max. 130

### PRESS BAR PRESSURE:

max. in N:	500
at 6 bar	

### STRAPPING MATERIAL:

Polypropylene DIN EN 13 394	
Width in mm:	4,8 - 5,2
Thickness in mm:	0,4 - 0,47

### SEALING METHOD:

Heat seal. Tensile strength of welded joint is approx. 80% of the breaking strength of the strap

### STRAP COIL:

Core ID in mm:	200
Core OD in mm:	420
Width in mm:	190 (160,180,200)

### POWER SUPPLY:

200-440V; 3 AC; 50Hz;

### POWER CONSUMPTION:

Total consumption approx. in kW:	1,5
----------------------------------	-----

### PNEUMATICS:

Operating pressure in bar:	6
Air consumption per cycle in l (free air):	10

### WEIGHT:

Total weight approx. in kg:	540
-----------------------------	-----

### OPERATING CONDITIONS:

Temperature range in °C [°F]:	+10 [50] - +40 [104]
-------------------------------	----------------------





德国制造

Made in Germany

**SMB Asia Distribution:**

Felins Asia (S) Pte Ltd  
67 Ubi Crescent  
#05-06 Techniques Centre  
Singapore 408560

Tel: +65-6383 0797 Fax: +65-6383 0798

**SMB Schwede Maschinenbau GmbH**

Markgrafenstraße 2  
95497 Goldkronach / Germany

☎ +49 9273 982-201  
@ sales@smb.biz  
🌐 www.smb.biz

